



COURSE RACING

OAKVILLE, ON AUGUST 2-4, 2019

2019 LYRA Race Week



134th Lake Yacht Racing Association Annual Regatta

2019 LYRA Race Week – Course Racing – OYS, OC, BHYC – August 2-4, 2019

SUPPLEMENT to SAILING INSTRUCTIONS – JULY 15, 2019

**Version V01.01/Date 2019-08-02
With Amendment 1**

The Organizing Authority is the Oakville Yacht Squadron (OYS), Oakville Club (OC) and Bronte Harbour Yacht Club (BHYC) in conjunction with Lake Yacht Racing Association (LYRA)



**Oakville Yacht Squadron
146 Lakeshore Road West
Oakville, ON L6K 0A3
www.oysqn.com**



**Oakville Club
56 Water Street
Oakville, ON L6J 2Y3
www.oakvilleclub.com**



**Bronte Harbour Yacht Club
2514 Lakeshore Road West
Oakville, ON L6L 1H8
www.bhyc.on.ca**

#	DATE	ITEM	CHANGE
1	2019-08-02	16.1	Change: <u>Online Protest Console</u> hyperlink is changed to https://www.racingrulesofsailing.org/events/419

1 RULES

- 1.1 The sailing instructions for this series will consist of the instructions in RRS Appendix S, Standard Sailing Instructions, and this sailing instructions supplement.
- 1.2 Appendix T of the RRS will be in effect.

2 NOTICES TO COMPETITORS

- 2.1 The official notice board is in the Event Office located in the OYS parking lot.
- 2.2 Notices will also be posted at BHYC. Failure to do so will not be grounds for redress.
- 2.3 All notices shall be posted electronically to yachtscoring.com

3 CHANGES TO SAILING INSTRUCTIONS

- 3.1 All changes to sailing instructions shall be posted by 9:00 on the day of the event. Changes to schedule will be posted by 20:00 the day before they take effect.

4 SIGNALS MADE ASHORE

- 4.1 The flagpole is located on the main lawn of OYS.
- 4.2 When flag AP is displayed ashore, "1 minute" is replaced with "not less than 45 minutes" in the race signal AP.
- 4.3 Signals will also be made at BHYC. Failure to do so will not be grounds for redress.

5 SCHEDULE OF RACES

- 5.1 Dates of racing: Friday August 2, Saturday August 3 & Sunday August 4, 2019.
- 5.2 Number of races:

Class	Number	Maximum Races/Day
All Classes (except NFS PHRF-LO)	9	4
NFS PHRF-LO	5	4

- 5.3 The scheduled time of the warning signal for the first race on Friday, August 2 is 11:55 hrs.
- 5.4 The scheduled time of the warning signal for the first race on Saturday, August 3 is 10:55 hrs.
- 5.5 The scheduled time of the warning signal for the first race on Sunday, August 4 is 10:55 hrs.
- 5.6 On the last day of the Regatta no warning signal will be made after 14:00 hrs.

6 CLASS FLAGS

- 6.1 Class Flags will be used as the Warning Signal for each class. Class flags will be:

Class	Flag	Class	Flag
8 mR	Numeral Pennant 1	GLMRA	Numeral Pennant 8
IRC	Numeral Pennant 2		
Etchells	Etchells Class Flag		
J/27	J/27 Class Flag		

6.2 Alternative and/or additional class flags may be announced at the Competitors' meeting and posted on the official notice board by 09:00 hrs on August 2.

7 RACING AREAS

7.1 The Racing Areas are shown in Attachment 1.

7.2 **Alpha Course** will be located approximately 2.7 nm on compass bearing approximately 185° from the entrance to Sixteen Mile Creek. VHF Channel 72 INTERNATIONAL.

7.3 **Bravo Course** will be located approximately 1.6 nm on compass bearing approximately 135° from the entrance to Sixteen Mile Creek. VHF Channel 71 INTERNATIONAL.

8 THE COURSES

8.1 The diagram in Attachment 2 shows the course.

9 MARKS

9.1 Marks 1, 1a, 2, and 3 will be:

Alpha Course	Bravo Course	Charlie Course	Delta Course
Orange Inflatables	Yellow Inflatables	Orange Inflatables	Yellow Inflatables

9.2 Start and Finish marks will be:

	Alpha Course	Bravo Course	Charlie Course	Delta Course
START Mark	Green Inflatable	Green Inflatable	Green Inflatable	Green Inflatable
FINISH Mark	Red Inflatable	Red Inflatable	Red Inflatable	Red Inflatable

9.1 New marks, as provided in instruction 12.1, will be a yellow inflatable with green distinguishing marking.

9.2 Where there is a gate, if one of the gate marks is missing, the remaining gate mark will be left to port.

9.3 In the event of a change of the next leg of the course, there will be no offset mark. All classes shall round the new mark leaving it to port.

10 AREAS THAT ARE OBSTRUCTIONS

10.1 If a diving boat is operating sufficient berth must be given.

11 THE START

11.1 Races will be started by using rule 26.

11.2 The starting line will be between the start mark and the orange flag on the signal boat.

11.3 Boats whose warning signal has not been made shall avoid the starting area during the starting sequence for other fleets.

11.4 A boat that does not start within 4 minutes of her starting signal will be scored Did Not Start without a hearing. This changes RRS A4 and A5.

12 CHANGE TO THE NEXT LEG OF THE COURSE

- 12.1 To change the next leg of a course, the race Committee will lay a new mark (or move the finishing line) and remove the original mark as soon as practicable. When in a subsequent change a new mark is replaced, it will be replaced by an original mark.

13 THE FINISH

- 13.1 The finishing line will be between the finishing mark and an orange flag on the signal boat.

14 PENALTY SYSTEM

- 14.1 A boat that has taken a penalty or retired under RRS 31 or 44.1 shall complete an acknowledgment form at the jury desk within the protest time limit.
- 14.2 For all classes RRS 44.1 is changed so that the Two-Turns Penalty is replaced by the One-Turn Penalty.

15 TIME LIMITS

- 15.1 Time Limits are as follows:

Class	Mark 1 Time Limit	Race Time Limit
8 mR	30 minutes	60 minutes
All others	20 minutes	80 minutes

- 15.2 Finishing Window - Time limit for boats to finish after the first boat in their class sails the course and finishes is 25 minutes.
- 15.3 The Race Committee may, at its discretion, award points to a boat, equivalent to the boat's position in a race. The Race Committee determines the method and order. This changes RRS 35, A4 and A5. Placement by the Race Committee will not be grounds for redress.

16 PROTESTS AND REQUESTS FOR REDRESS

- 16.1 Protests, requests for redress and scoring inquiries are made online at [Online Protest Console](#)

17 SCORING

- 17.1 The scoring system of RRS Appendix A2 will be applied as modified below.
- 17.2 One (1) race is required to be completed to constitute a series.
- When fewer than six (6) races have been completed a boat's series score will be the total of her race scores.
 - When six (6) or more races have been completed, a boat's series score will be the total of her races excluding her one worst score.
- 17.3 PHRF-LO Alternate ToT formula will be used for PHRF Racing.

18 SAFETY REGULATIONS

- 18.1 Boats must check in with the signal boat prior to the preparatory signal of their start.
- 18.2 A boat that retires from the race shall notify the race committee as soon as possible.

19 REPLACEMENT OF CREW OR EQUIPMENT

19.1 Substitution of competitors or equipment is subject to Class rules.

20 EQUIPMENT AND MEASUREMENT CHECKS

20.1 A boat or equipment may be inspected at any time for compliance with Class Rules and SI's which may include RRS 43.

24 TRASH AND SEWAGE DISPOSAL

24.1 All boats shall comply with R.R.O. 1990, REGULATION 343

25 HAULOUT RESTRICTIONS

25.1 See NOR 12.1

26 DIVING EQUIPMENT AND PLASTIC POOLS

26.1 Underwater breathing apparatus and plastic pools or their equivalent shall not be used around keelboats between the preparatory signal of the first race and the end of the regatta.

27 RADIO COMMUNICATION

27.1 See NOR 13.1

27.2 INTERNATIONAL channels will be used.

28 PRIZES

28.1 See Attachment A of the Notice of Race.

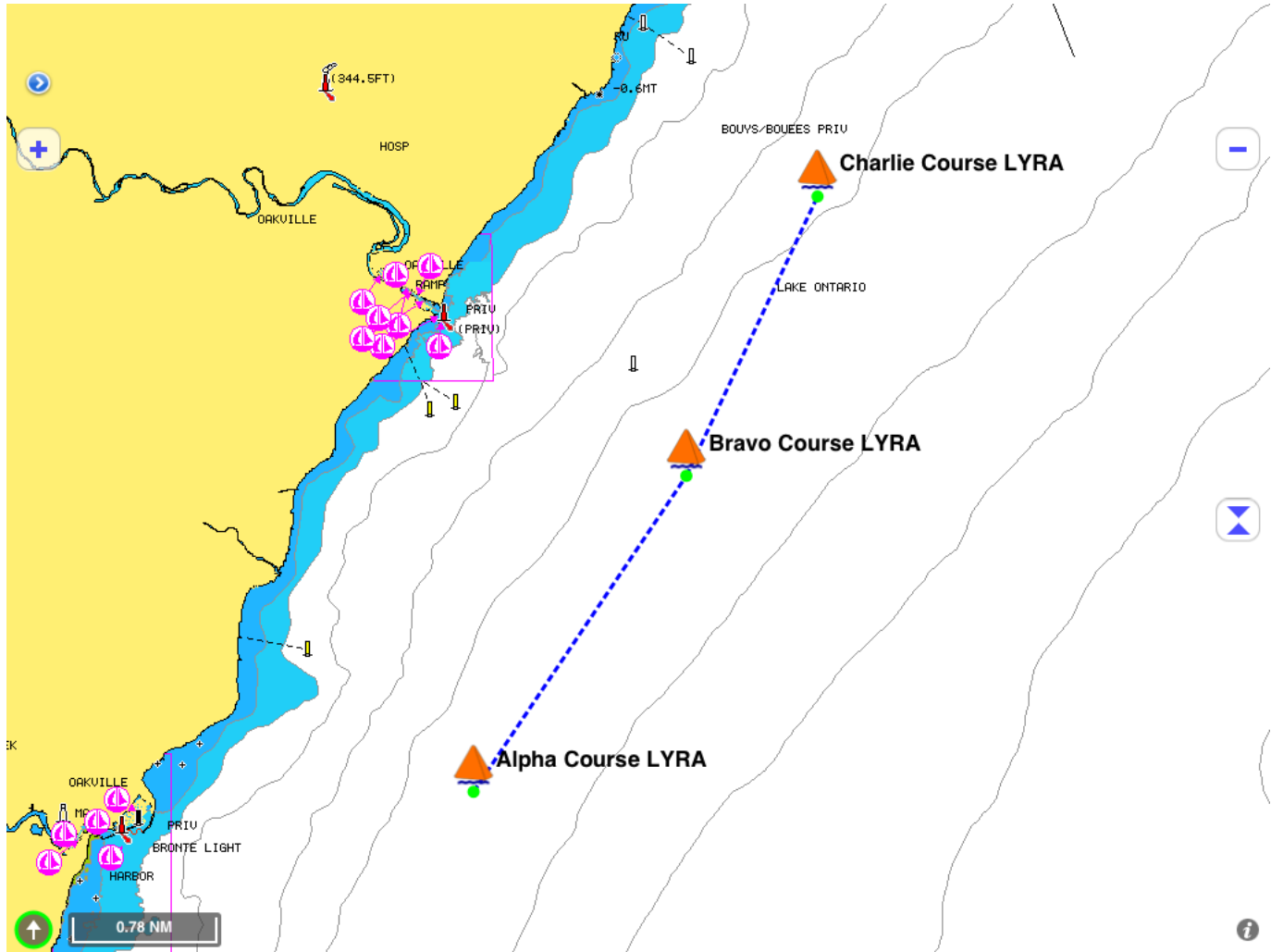
29 DISCLAIMER OF LIABILITY

29.1 See NOR 15.

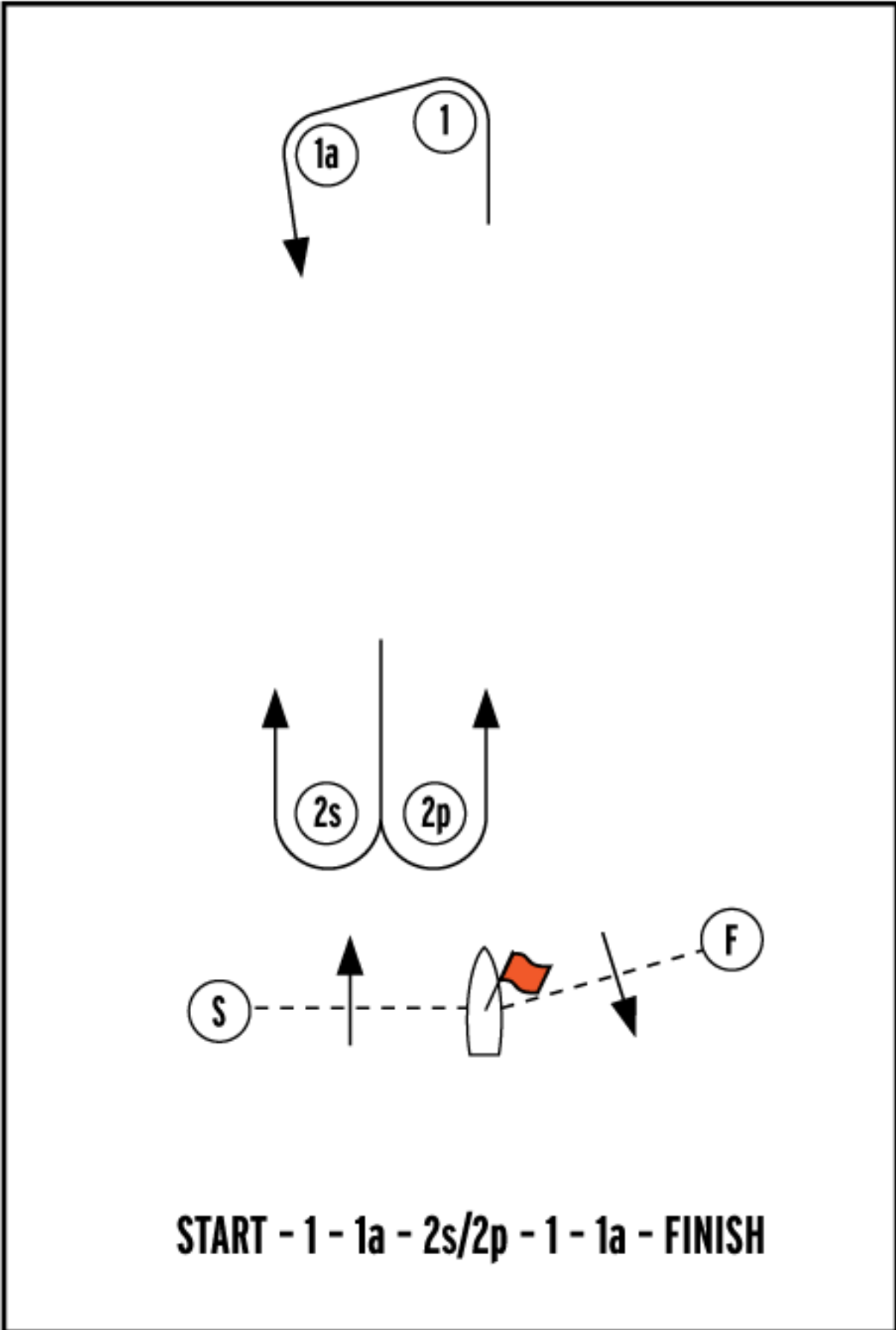
30 INSURANCE

30.1 See NOR 16.

ATTACHMENT 1 – THE RACING AREAS



ATTACHMENT 2 – THE COURSES



ADDENDUM A

Sailing Instructions for the Olson 30 Long Distance Race - Saturday 3 August

1 SCHEDULE OF RACE

1.1 Date of racing: Saturday August 3, 2019.

1.2 The scheduled time of the warning signal for the race is Saturday, August 3 at 09:55 hrs.

2 THE COURSE

2.1 The Course for the race will be Start – Grimsby ODAS Buoy – CCIW Spider – Finish

2.2 The Course Diagram is found in Attachment 3

3 MARKS

3.1 The marks of the course will be:

Mark	Description	Coordinates
Grimsby ODAS Light Buoy	Yellow Lighted Buoy 45139	43°15.541'N 079°32.317'W
CCIW Spider	Tower with yellow flashing light	43°16.260'N 079°45.620'W

4 THE START

4.1 Races will be started using rule 26.

4.2 The starting line will be approximately 1nm due west of the Shell Pier Light between an orange tetrahedron located at approximately 43°22.354'N 079°41.232'W and the orange flag on the signal boat.

4.3 Boats whose warning signal has not been made shall avoid the starting area during the starting sequence for other fleets.

4.4 A boat that does not start within 4 minutes of her starting signal will be scored Did Not Start without a hearing. This changes RRS A4 and A5.

5 THE FINISH

5.1 The finishing line will be approximately 1nm due west of the Shell Pier Light between an orange tetrahedron located at approximately 43°22.354'N 079°41.232'W and the orange flag on the signal boat.

6 TIME LIMIT

6.1 Boats which have not finished by 1830 hours on the day of the race will be scored DNF without protest.

ATTACHMENT 3 – COURSE DIAGRAM – OLSON 30 LONG DISTANCE RACE

